

**60 cm freestanding bottom mount refrigerator,
stainless steel**
Professional Series

£ 1,099



RBM60F4FXNC

This 60 cm freestanding bottom-mount refrigerator has a total capacity of 331 liters. The refrigerator is equipped with 4 shelves, 3 of which with variable height, 3 door bins and 2 drawers with adjustable humidity. The ZeroFresco chiller drawer allows to better preserve your meat and fish at a temperature of around 0°C.

The Total No Frost cooling system avoids the formation of ice and bacteria. The LED touch interface has been designed for maximum ease of use. The LED illumination ensures perfect lighting on all levels.

PureBreeze UV technology eliminates 99.99% of bacteria and viruses with UV-C LED rays, while the activated carbon filter effectively filters odors and improves air quality, keeping the atmosphere of the refrigerator cool.

Using one of the 2 available handle kits in Professional and Master Series style, this refrigerator integrates seamlessly with all other Bertazzoni appliances into style-harmonized suites for a true, high-performing kitchen.

E energy class.

[Guarda online](#)

Specifications

Features

General features

| | |
|---------------------------|--|
| Size | 60 cm |
| Cooling system | Total No Frost |
| User interface | internal digital LED touch interface |
| Display functions | Super freeze, Eco mode |
| Lighting | LED lighting |
| Open door alarm | yes |
| Door finishing | stainless steel |
| Cabinet finishing | white |
| Refrigerator net capacity | 230 L |
| Refrigerator shelves | 3 height-adjustable + 1 stationary |
| Refrigerator drawers | 1 with adjustable humidity + 1 FrescoZero with separate temperature and humidity control |
| Bins | 3 bins |
| Freezer net capacity | 100 L |
| Freezer drawers | 3 |
| Sound rating | 41 dbA |

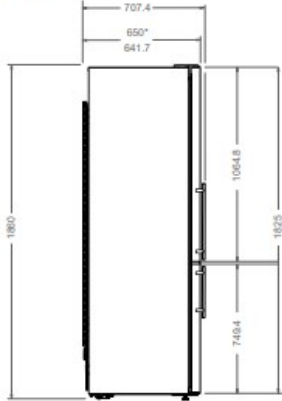
Technical specifications

| | |
|---------------------------------|-----------------|
| Energy class | E |
| Voltage and frequency | 220-240V, 50 Hz |
| Absorbed power (W) | 197 W |
| Annual energy consumption (kWh) | 250 |

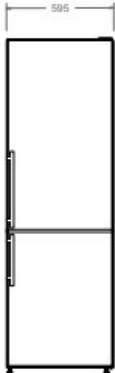
Dimensions

PRODUCT DIMENSIONS

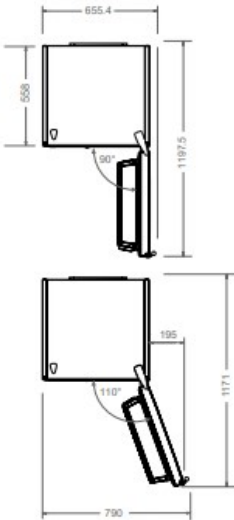
SIDE VIEW



FRONT VIEW



TOP VIEW



* with condenser

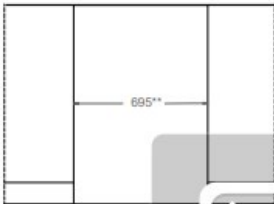
CUTOUT DIMENSIONS

SIDE VIEW



* dimension with a minimum clearance of 150 mm on top

FRONT VIEW



** dimension with a minimum clearance of 50 mm on both sides

TOP VIEW



*** dimension with a minimum clearance of 15 mm on back

